

# K O B E

Kobe City PR Paper English November 2023

## Let's talk about the future of Kobe



If you have any questions about ward office procedures, financial support for raising children, etc.



↑ Tap here to visit the website!

Call the Kobe International Community Center (KICC)!

☎ 078-742-872 | (11 languages)



Edited by: Kobe City International Division

## Let's talk about the future of Kobe

Kobe is undergoing redevelopment for the future of the city as a whole. What does that future look like? Mayor Hisamoto provides some answers.

### What kind of city do you want Kobe to become?

Kobe is a city with many faces: the city, suburbs, old downtowns, and rural areas. It is important to make plans for maintaining a well-balanced population and ensuring its development. We want to create a city that suits people's way of life and allows a relaxed way of living without feeling pressed for time.

### Why are more and more of the station-front areas in the suburbs seeing new changes?

Major stations such as Myodani, Tarumi, and Seishin-Chuo are undergoing renovations. We will shift Kobe away from becoming a commuter town by creating living spheres that have everything—shopping, medical care, culture, sports, even places to do work. And since the sea and mountains are just next door, you can enjoy a lifestyle that coexists with nature.

### Tell us what you hope Sannomiya will become

We want Sannomiya to be where people come first, where they can enjoy walking around. By reducing the amount of traffic that passes in front of the station, it will be transformed into a place that prioritizes pedestrians. The renovations of Sankita Plaza and Kobe East Park will connect the waterfront, Motomachi, Kitano, and other downtown areas so that everyone can enjoy strolling through them.

### How will other areas undergo urban development?

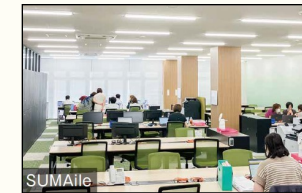
We will take appropriate steps to preserve the city's diverse strengths and pass them on to future generations. The old downtown area is full of humanity in the interactions that occur in its shopping streets, public baths and restaurants. It will become stronger and more interesting by making use of vacant buildings, creating mini green areas, and working with local startups. On Mt. Rokko, idle villas and resorts are being turned into offices, co-working spaces, and new types of accommodation facilities.

## 4 key phrases for creating Kobe's future

We are conducting urban development that allows people to live enriched lives alongside nature.

### 1. Living at just the right rhythm

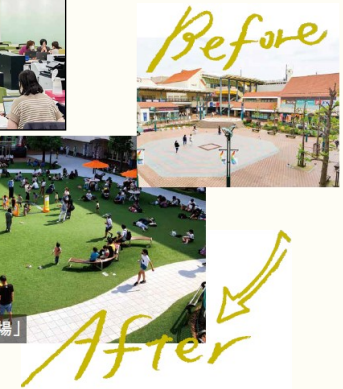
From everyday shopping to medical care, education, cultural facilities, event venues, and workplaces, find them in one place near major suburban stations.



SUMAile Job Share Center



Suma Patio shopping square



### 2. Walkable neighborhood where "People come first"

A smooth connection between buses and trains in Sannomiya, easy for both locals and tourists to understand. Sannomiya will be the starting point for many to enjoy shopping, art, and delicious food, as well as have exciting encounters on their walks.



JR新駅ビル(三宮クロススクエア)完成イメージ

JR New Station Bldg. (in Sannomiya Cross Square)

Scheduled to be completed in 2029

### 3. Living alongside the mountains and sea

By going to nature-rich areas like Mt. Rokko and the Seto Inland Sea, you can forget the stresses of everyday life and relax.



Café in a thatched-roof house, agricultural experience

Shared office in the forest



### 4. Ensuring that neighborhoods retain their individuality for future generations

The stations, neighborhoods, and roads next door. If you try to take away what makes them unique, they become completely different.

A new gathering place in Nagata Ward



Vacant property tour



## TALKING CIRCLE KOBE survey #2

“Will Kobe become more interesting if we do \_\_\_\_\_ more?” We are conducting this survey to collect your thoughts, which will be used in creating Kobe’s future.

Over 16,000 people responded to our first survey! This time, we will dig deeper into what makes Kobe’s places and people attractive. Please share your anecdotes with us!



Whether you’ve answered the 1st survey or this is your first time, please take the time to answer!



←JP

EN→

## Kobe’s famous must-go autumn spots!

### Zuihoji Park

**Viewing season: Early to late November**



Located behind the Arima Hot Springs town, the park itself has a very relaxing atmosphere. When you pass through the park’s gate (the former main gate of Zuihoji Temple), varied hues of red and yellow stretch out before you. The sight is so beautiful that you might not notice time pass, which is why it is also called “Higurashi no Niwa” (The Garden of Passing Time).

**Location:** 500-19 Arima-cho, Kita-ku

**Admission:** Free

### Kobe Municipal Arboretum: Autumn Leaves Light-up

**Dates:** Nov. 3 - Dec. 3, Sat./Sun./Hol. 4:30 - 7:30 pm



At the peak of the season for leaves to change color, the arboretum will have extended evening hours on weekends and holidays from Nov. 3, and in certain areas the autumn leaves will be bathed in light. Come enjoy this magical world, especially the amazing sights of the illuminated lane of dawn redwoods and towering sequoia trees.

**Park Hours:** 9 am - 5 pm (Until 7:30 pm on light-up days)

**Not closed during the “Arboretum Autumn Leaves” period (森林もみじ散策)**

**Location:** 1-2 Azanagao, Kamitanigami, Yamada-cho, Kita-ku

**Admission:** SHS & up 300 yen, ES/JHS 150 yen

## #TransformationofKobe Seishin-Chuo Plenty

Seishin-chuo, “where people and nature live together in the city”. The station-front shopping center Plenty reopened after renovations on October 19.

### 1. Interesting new shops

A number of exciting shops are opening one after another, including BREAD PARK KOBE (which sells breads selected from popular bakeries in the city) and a long-awaited food court.

### 2. Helping with the first step

The pop-up shop Foule de PLENTY is a permanent space that supports startup businesses and market development. It can also be used as a place to sell local produce and handmade products, and to display artwork.

### 3. Fantastic kids spaces

Asobi no Mori (“Forest of Play”) and Manabi no Umi (“Sea of Learning”) utilize digital content to allow everyone from babies to elementary school students to play while learning. After playing their hearts out, they can take a relaxing break at the parent & child cafe.

### 4. Wide and open rooftop plaza

The SKYPARK is an open lawn space is located on the building’s rooftop. Children can play energetically on the small hills and play equipment. The benches are made from wood harvested from trees on the roadsides of Nishi Ward.

